

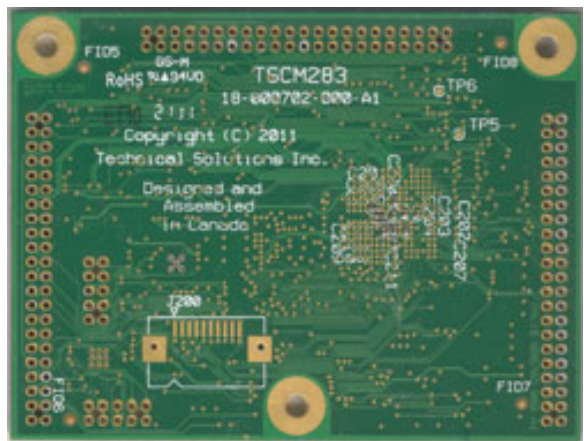
TSCM-283 Medallion Touch Screen Computer Module

\$Id: tscm283.xml 2597 2012-07-30 05:34:25Z brolin \$

This Module is powered by an i.MX283 processor from Freescale Semiconductor.

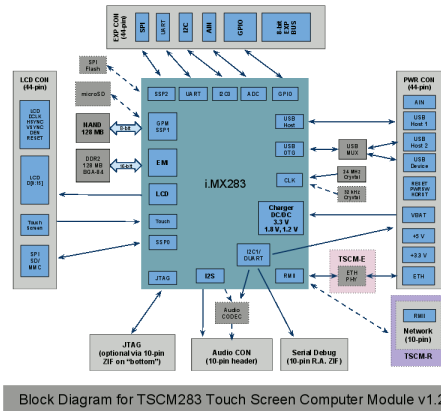
Feature	Description
Processor	ARM926EJ#S with 16 kB instruction cache and 32 kB data cache
Processor speed	Programmable up to 454 MHz
LCD	<ul style="list-style-type: none"> 18-bit TFT integrated resistive touch panel controller FETs on-board
Power	<ul style="list-style-type: none"> Single 3.3 V supply in OR Li-Ion Cell multiple on-board supplies on-board 10/100 Ethernet MAC and optional PHY on-board reset controller very low power consumption
Serial ports	<ul style="list-style-type: none"> 2 UARTs with RX/TX 1 IrDA on one of the UARTs 2 I²C (in HW) for on-board config. management and user functions

Product Image



Block Diagram

Feature	Description
	<ul style="list-style-type: none"> 1 High-speed SPI
USB	<ul style="list-style-type: none"> 1 or 2 High-speed USB 2.0 Host port 1 High-speed USB 2.0 Device port Host and Device share 1 interface via on-board mux
Audio	<ul style="list-style-type: none"> Microphone input Stereo Headphone amplifiers optional IIS interface instead
GPIO	8
NOR flash	optional serial flash memory on dedicated SPI
Main memory	from 128 MB to 256 MB of DDR2 SDRAM
Solid-state disk	provided via on-board microSD or NAND flash (up to 1 GB)
Memory expansion	direct wire to 2nd SD card connector
Dimensions	60 mm × 80 mm
Software	Included drivers: <ul style="list-style-type: none"> all the on-board peripherals Linux framebuffer GTK+ Qt Embedded X11 (Xorg) Audio Play and Record programs file systems USB:



[enlarge image](#)

Ordering Information

Model Name	Part Number	Price: \$ at Q=1000
TSCM283#300	37#000702#300	\$51
TSCM283#310	37#000702#310	\$55
TSCM283#330	37#000702#330	\$59

Please [Contact Us](#) for pricing for other quantities.

Contact Us

Telephone	1 888 TECHSOL
Web	Contact form
E-mail	<sales@techsol.ca>

See also

- [TSCM#283 press release](#)
- [DevKits](#)

Feature	Description
	<ul style="list-style-type: none"> • Mass Storage Devices • Human Interface Devices <ul style="list-style-type: none"> • text input devices, such as keyboards • pointing devices, such as mice and trackballs • USB Gadget • etc. • for all the I/O board peripherals, such as: <ul style="list-style-type: none"> • Ethernet • USB Gadget • extra UARTs • etc.

Comparison

Base configuration includes a 454 MHz CPU, 128 MB RAM, 128 MB NAND flash memory.

Config	Audio Codec	Ethernet
TSCM283#300		10/100 MAC
TSCM283#310	#	10/100 MAC
TSCM283#330	#	10/100 MAC + 10BaseT/100BaseTX PHY